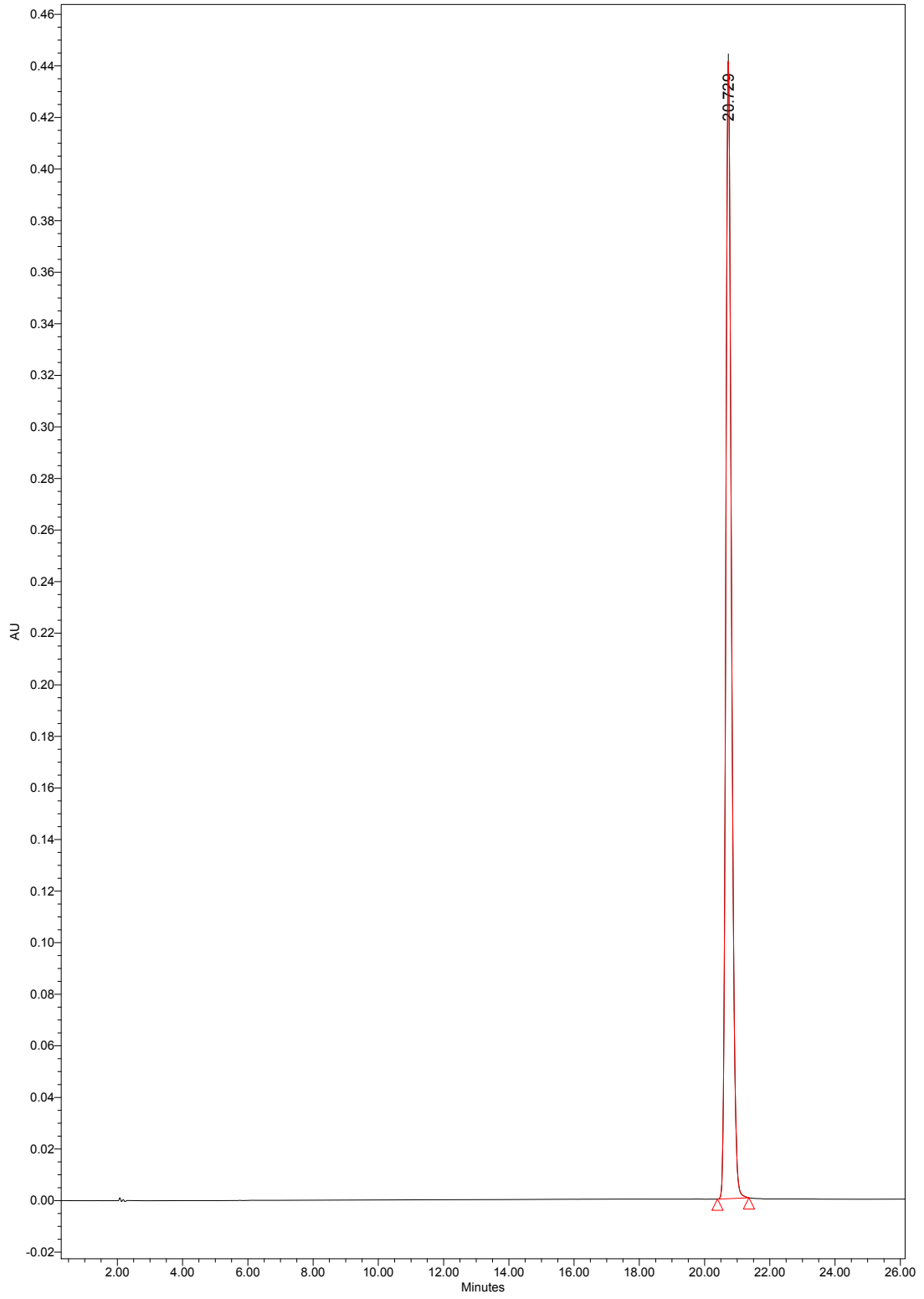


Supplementary material

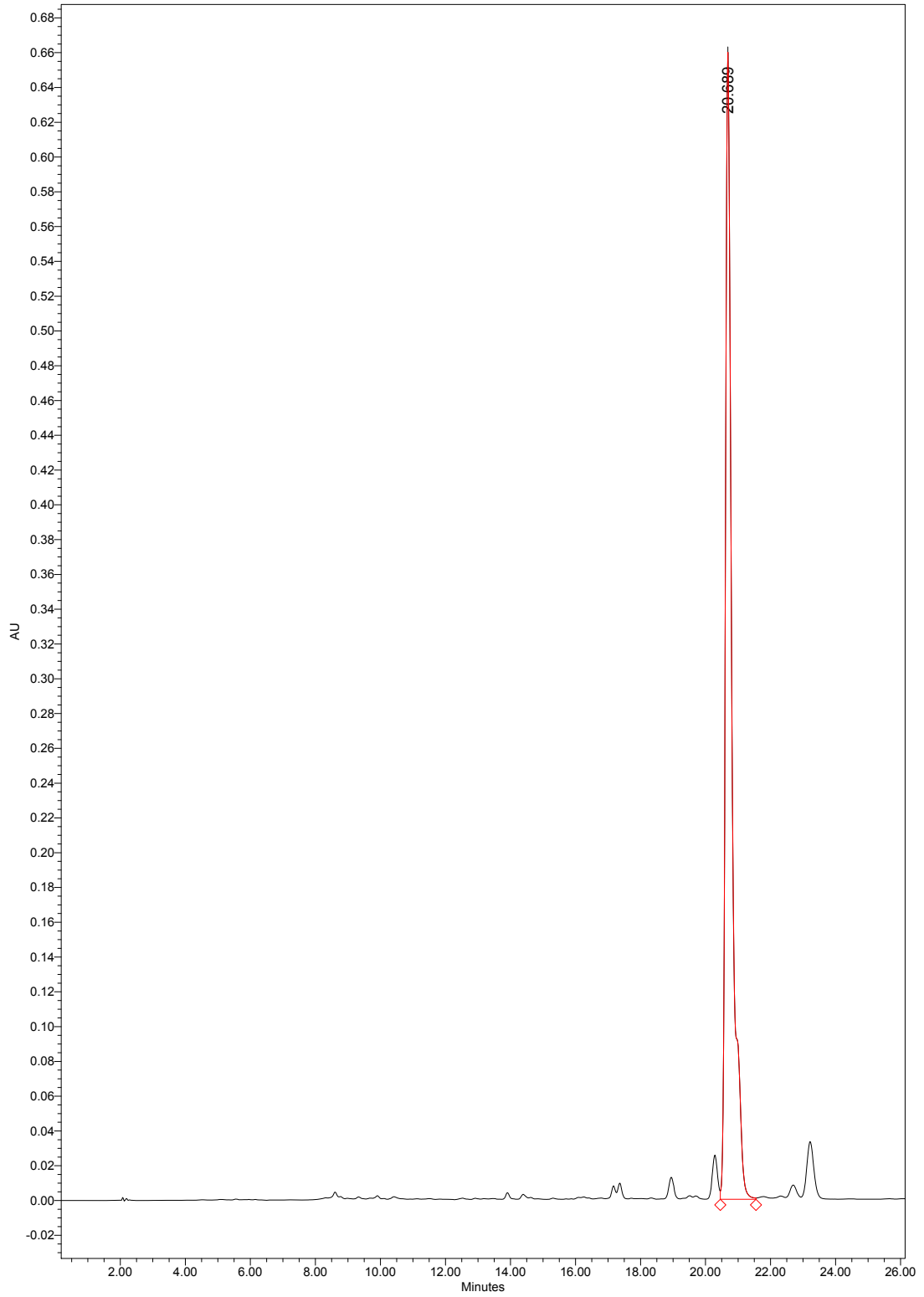
Appendix

- I) HPLC chromatograms for wavelength 273.2 nm with absorbant units (AU) and retention time of a) pure batatasin-III (0.3 mg/ml), b) an *E. nigrum* leaf sample, c) an *E. nigrum* humus sample and d) combination of pure batatasin-III (blue), leaf (black) and humus (green) curves in the same graph. All samples are from Bioassay 4. The quantification of batatasin-III was manually integrated by delimiting the peak assumed to belong to batatasin-III only, this way, we removed the presence of peaks from unwanted molecules in close proximity to batatasin-III.
- II) HPLC spectrum curve with absorbant units (AU) and wavelength (nm) for a) pure batatasin-III (0.3 mg/ml), b) an *E. nigrum* leaf sample and c) an *E. nigrum* humus sample.

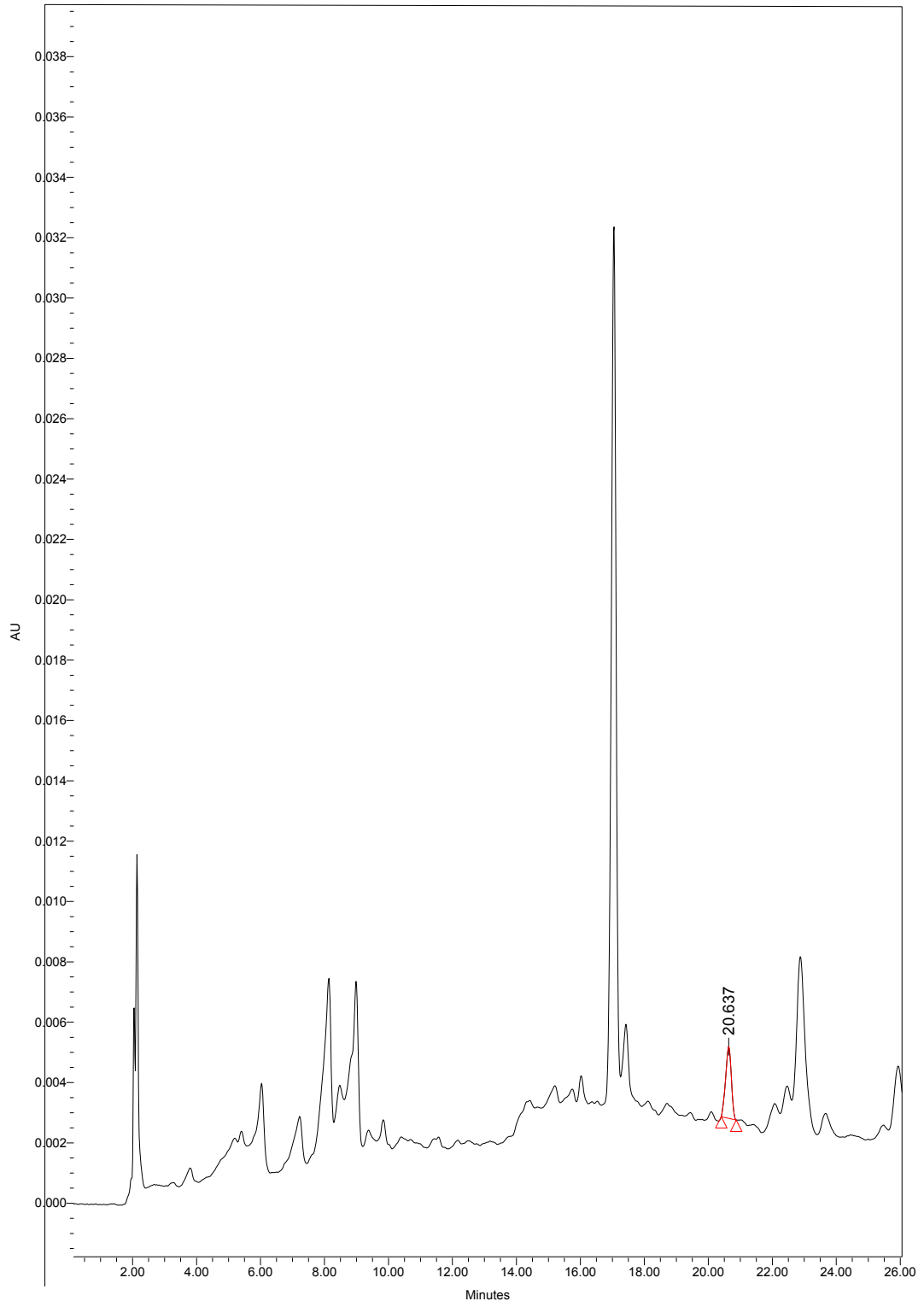
Ia)



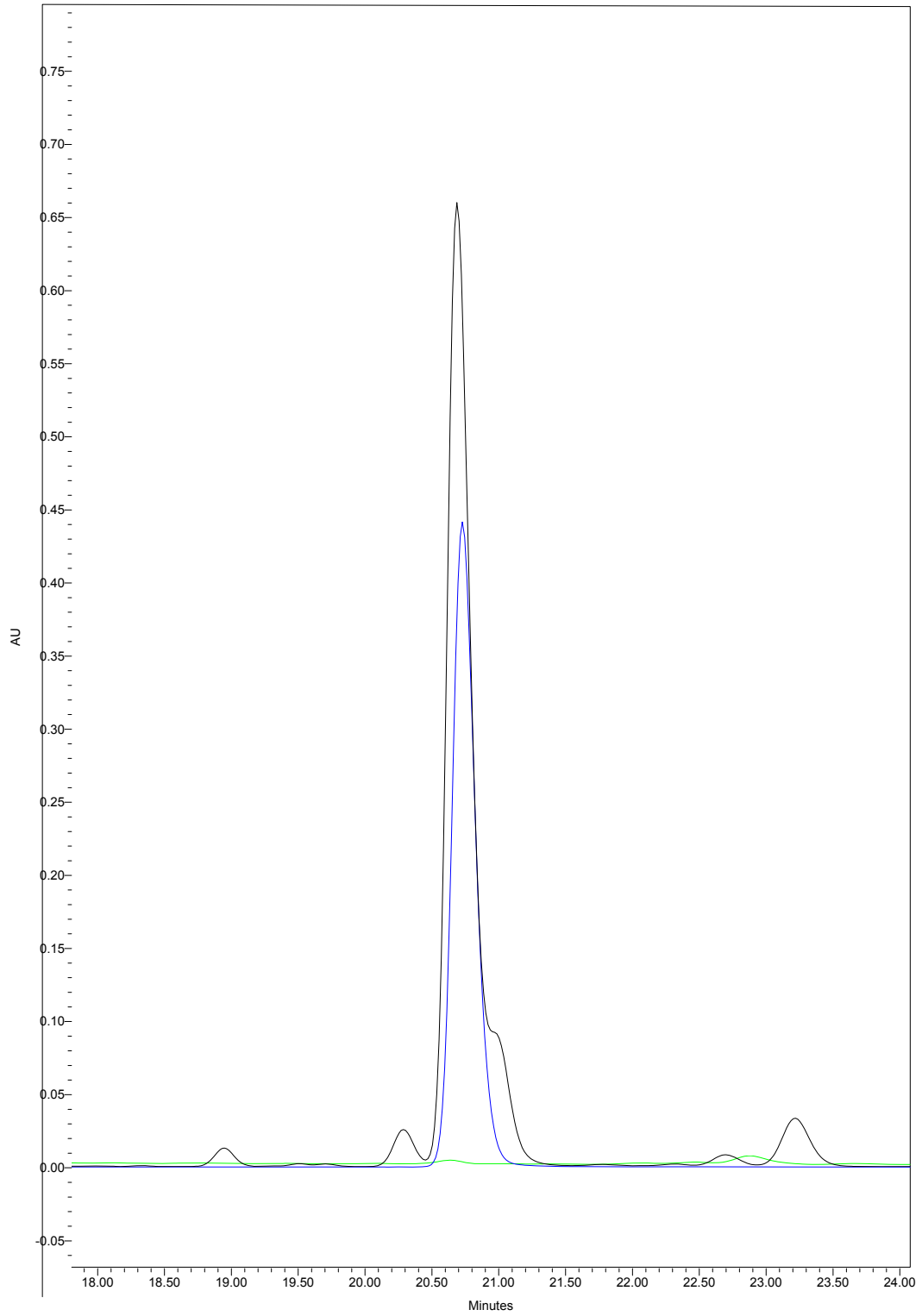
Ib)



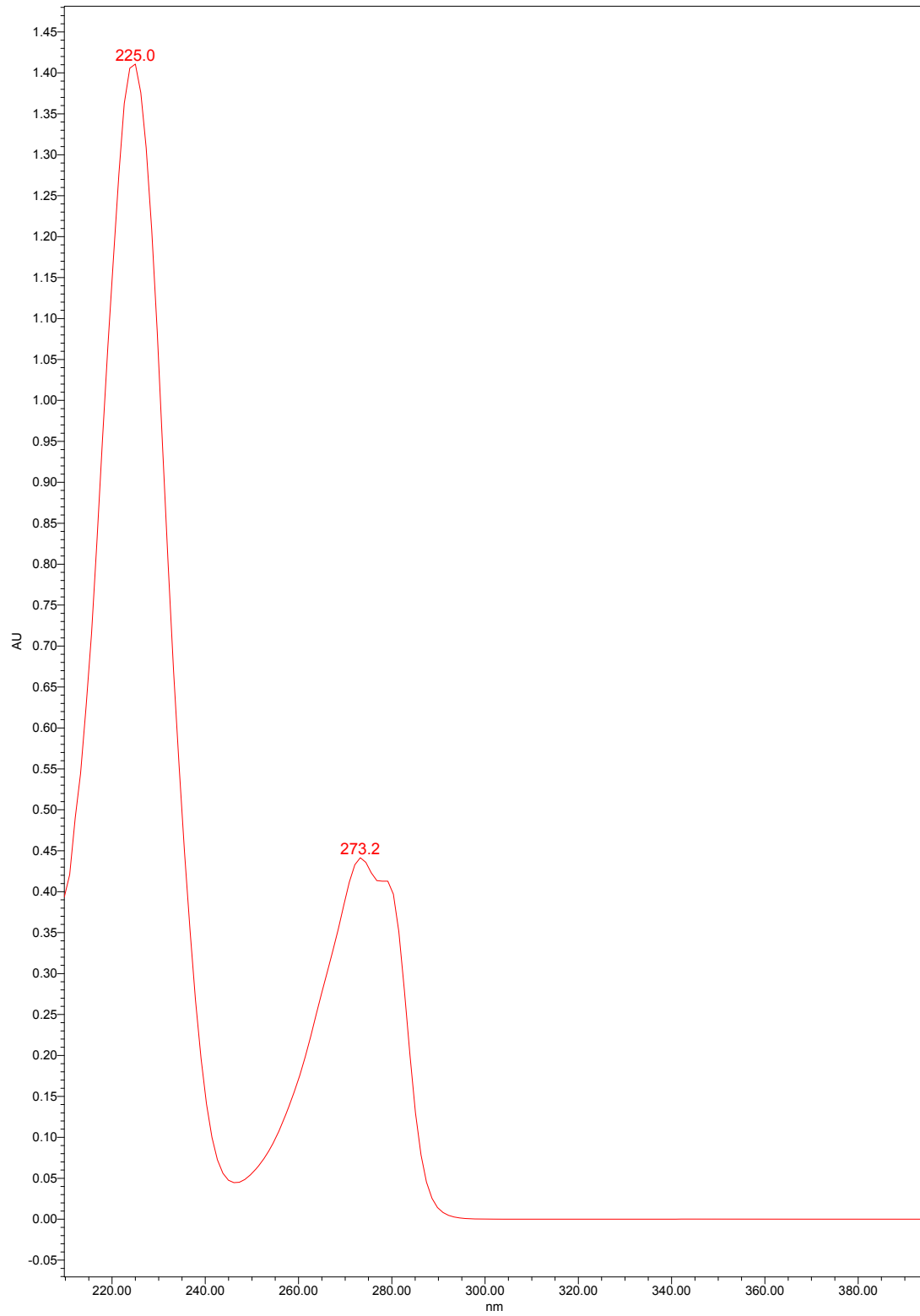
Ic)



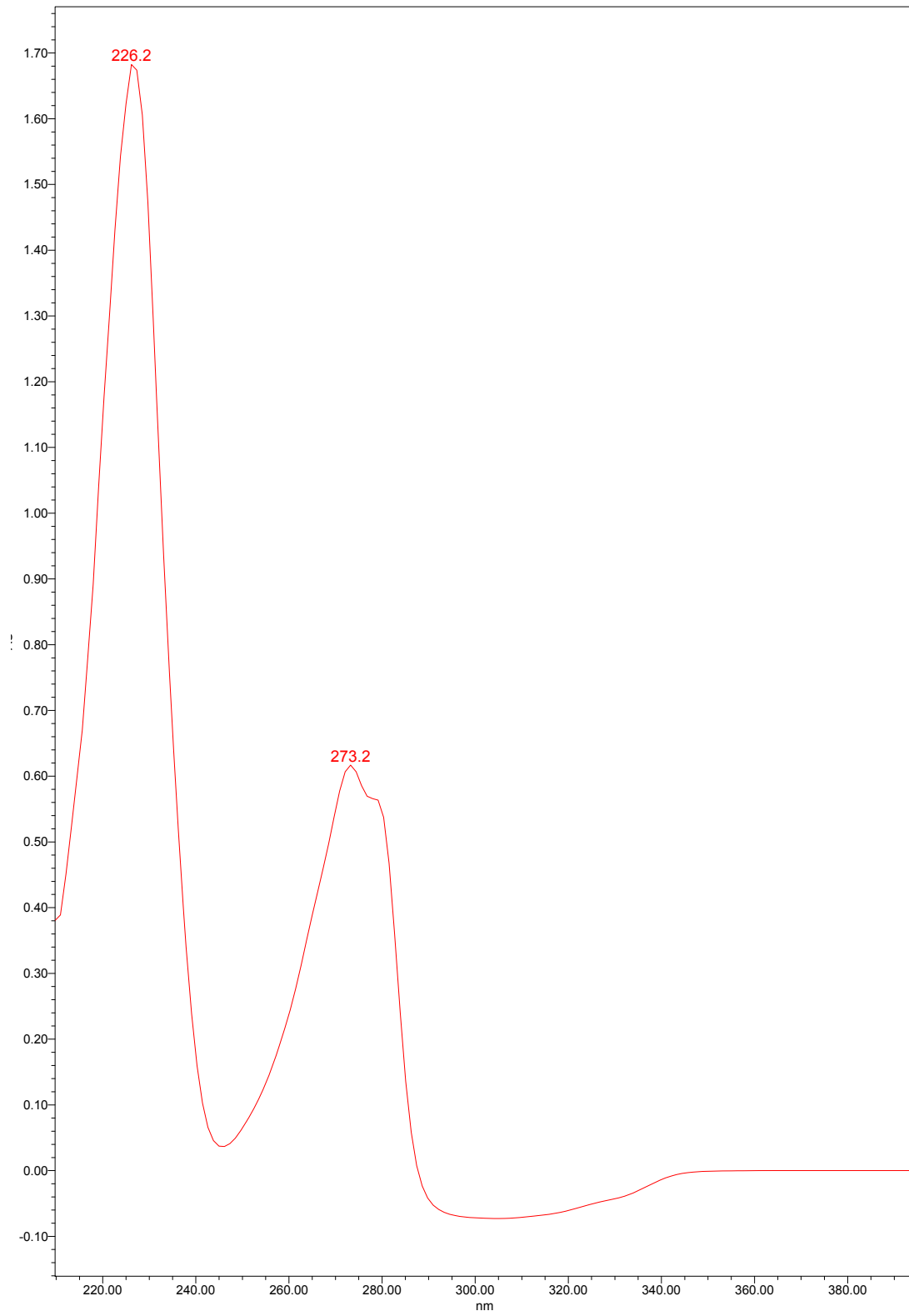
Id)



IIa)



IIb)



IIc)

