

Supplementary material

Figure A5. Mitotic metaphase chromosomes of species in *Aconitum* subgen. *Lycoctonum* from China, all same scale. (A)–(G) *A. angustius*, $2n = 32$: (A) Huangshan population (J. W. Shao s.n.), (B) Jinfoshan population (Y. Zhang et al. 37), (C) Wushan population (Y. Zhang et al. 51), (D) Kaili population (M. Tang and L. Wang 71), (E) Shangcheng population (J. P. Luo and L. Wang 195), (F) Zhuxi population (Y. Zhang et al. 52), (G) Yichang population (Y. Zhang et al. 17).

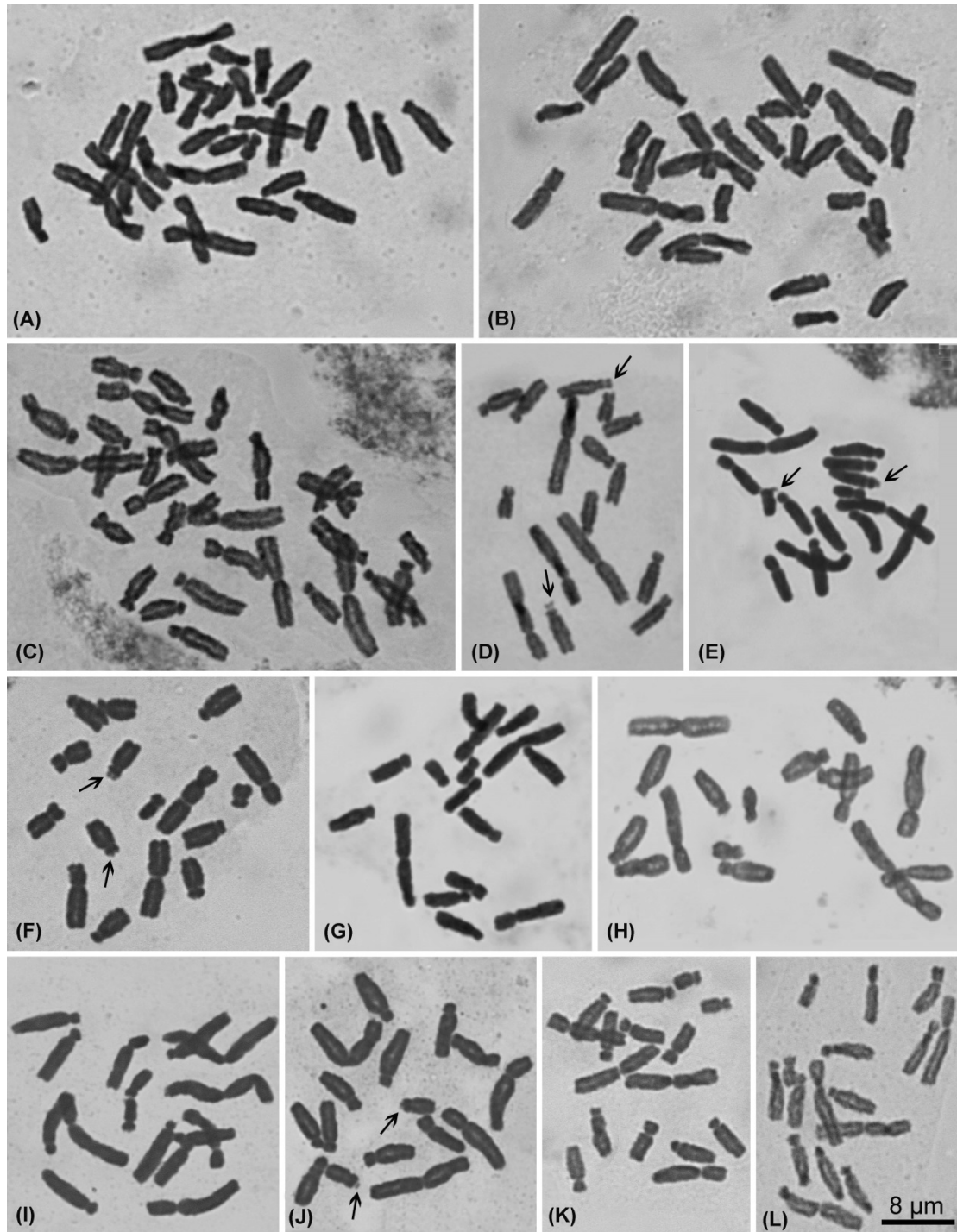


Figure A6. Mitotic metaphase chromosomes of species in *Aconitum* subgen. *Lycoctonum* from China, all same scale. (A)–(C) *A. angustius*, $2n = 32$: (A) Hupingshan population (Y. Zhang et al. 11), (B) Hengshan population (Y. Zhang et al. 22), (C) Badagongshan population (Y. Zhang et al. 16), (D)–(F) *A. leucostomum* var. *leucostomum*, $2n = 16$: (D) Gongliu population (Q. Gao and Z. C. Zhang 117), (E) Xinyuan population (Q. Gao and Z. C. Zhang 126), (F) Nilka population (C. Ren and L. Wang 735), (G) *A. leucostomum* var. *hopeiense*, $2n = 16$, (H) *A. wangyedianense*, $2n = 16$, (I) *A. shennongjiaense*, $2n = 16$, (J)–(L) *A. sinomontanum*, $2n = 16$: (J) Chengkou population (J. P. Luo and Y. Zou 77), (K) Kaixian population (Y. Zhang et al. 46), (L) Xingshan population (J. P. Luo and L. Wang 191). Arrows indicate satellited chromosomes in Fig. A6D–F, and J.

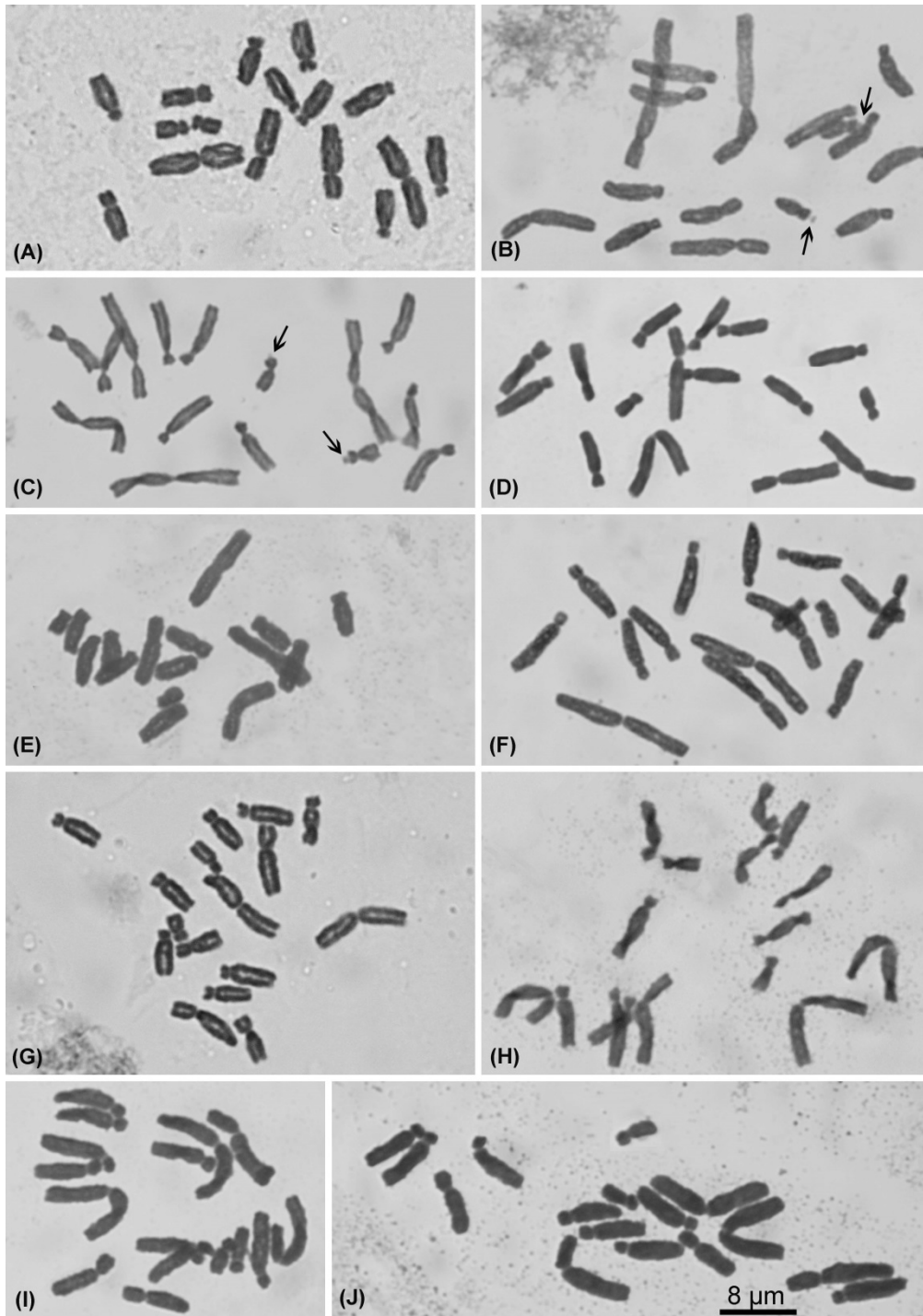


Figure A7. Mitotic metaphase chromosomes of species in *Aconitum* subgen. *Lycoctonum* from China, all same scale. (A) *A. sinomontanum*, $2n = 16$, Yongdeng population (J. P. Luo and L. Wang 239), (B) *A. umbrosum*, $2n = 16$, (C)–(H) *A. barbatum* var. *barbatum*, $2n = 16$: (C) Pingliang population (Q. Gao and Y. S. Chen 90), (D) Hunchun population (Q. Gao and Y. Liang 151), (E) Yanji population (Q. Gao and Y. Liang 165), (F) Huashan population (Q. Gao and Y. S. Chen 95), (G) Huozhou population (C. Ren and L. Y. Wang 306), (H) Yongji population (Q. Gao and Y. S. Chen 88), (I)–(J) *A. barbatum* var. *puberulum*, $2n = 16$: (I) Mentougou population (Q. Gao and Y. S. Chen 15), (J) Xiaowutaishan population (Q. Gao and Y. S. Chen 26). **Arrows indicate satellited chromosomes in Fig. A7B, and C.**