

Nordic Journal of Botany

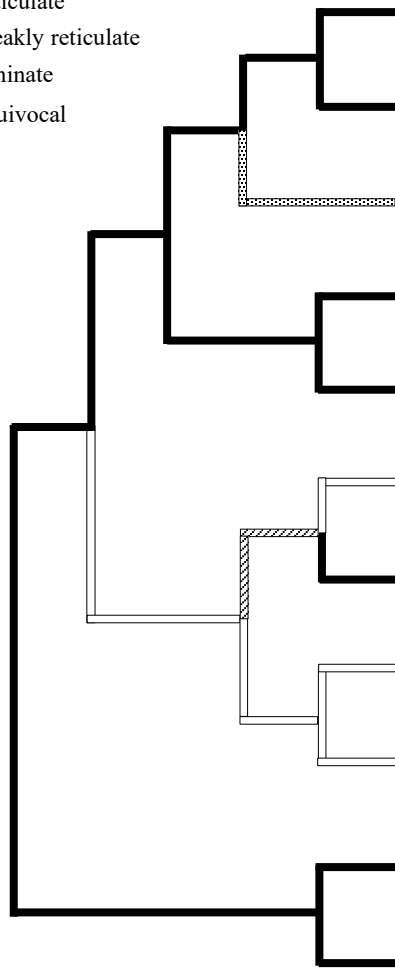
NJB-02275

Ghimire, B., Suh, Y., Soltis, D. E. and Heo, K. 2019. Phylogenetic relationships of *Coreanomecon* (Papaveraceae: Chelidonioideae) inferred from seed morphology and nrITS sequence data. - Nordic Journal of Botany 2019: e02275

Appendix 1

Surface sculpture

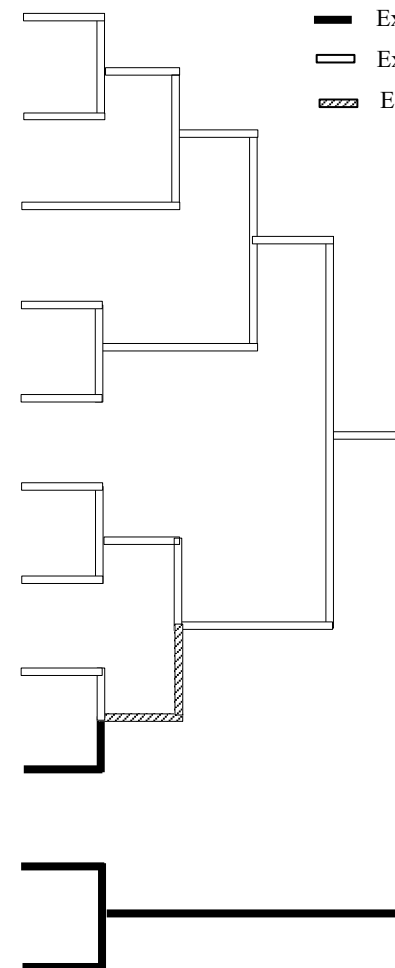
- Reticulate
- Weakly reticulate
- Echinulate
- Equivocal



A

Composition of testa

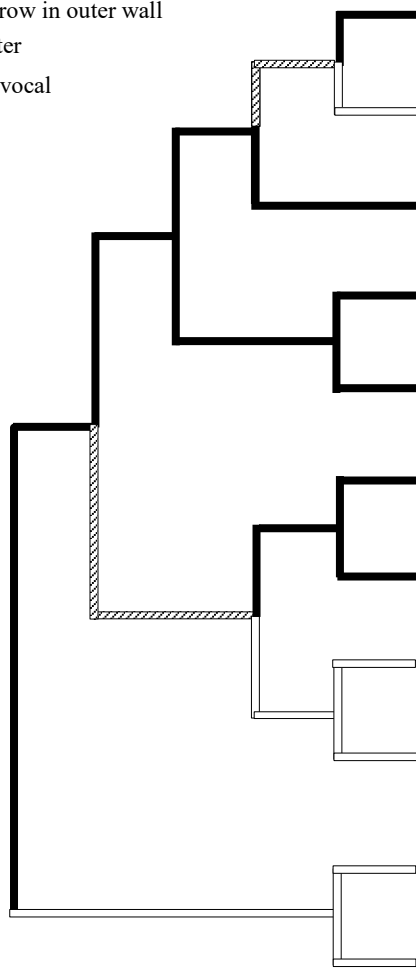
- Exo + meso + endo
- Exo + endo
- Equivocal



B

Crystals in endotesta

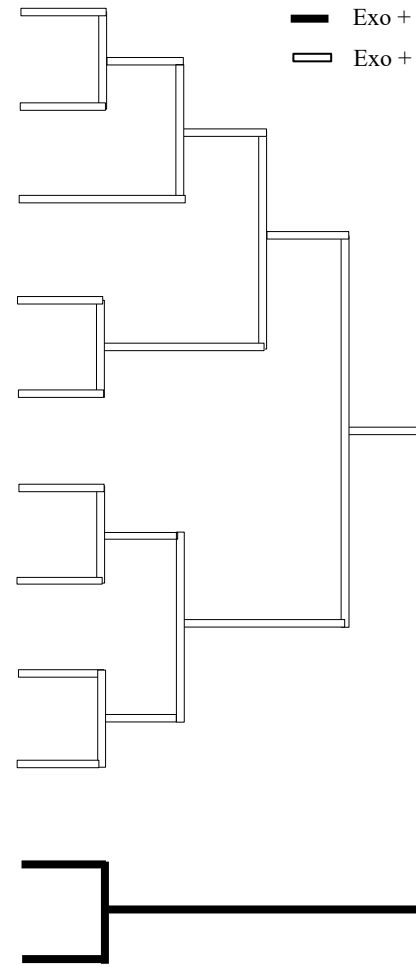
- One row in outer wall
- Scatter
- ▨ Equivocal



C

Aril

- Exo + meso + endo
- Exo + endo



D

Fig.