

Appendix 1

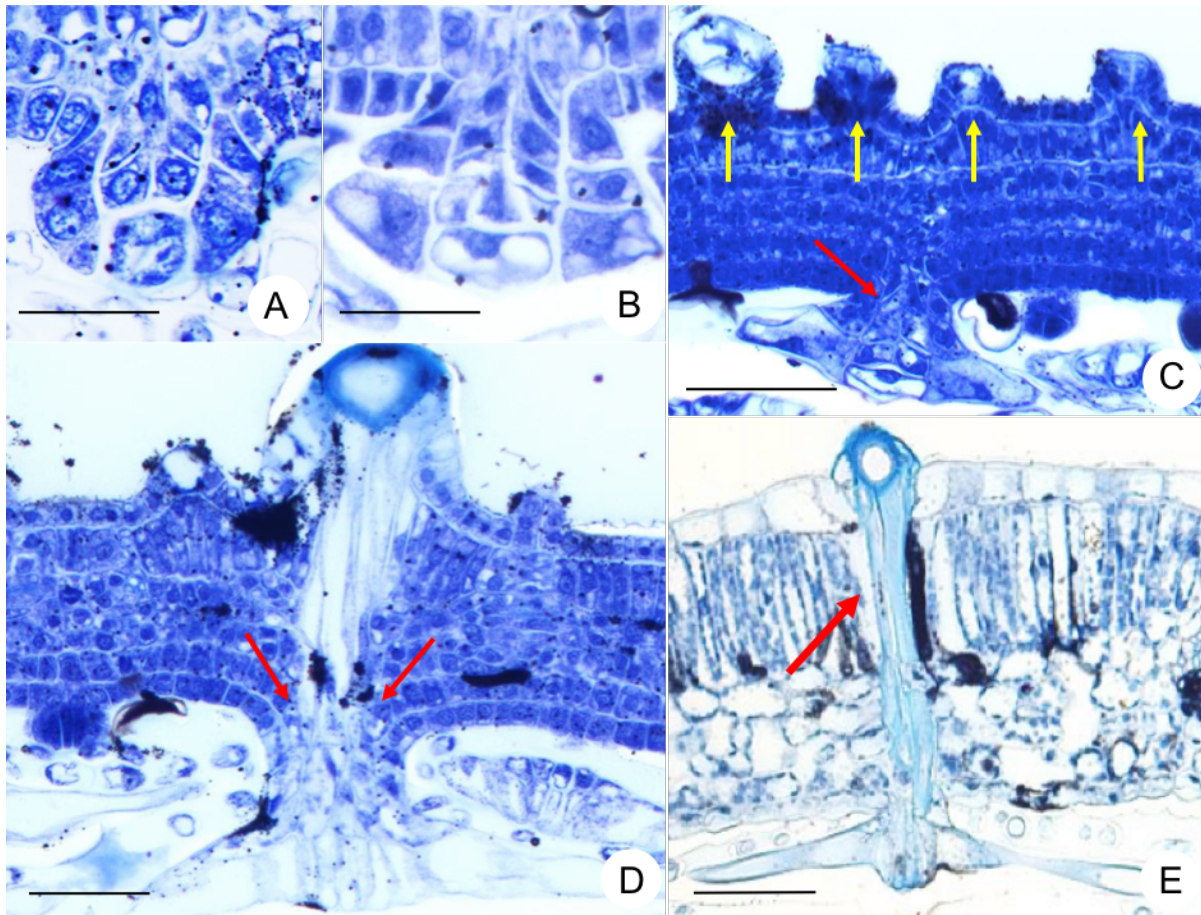


Figure A1. Cross-sections of *Croton floribundus* leaf blades stained with toluidine blue. (A–B) Ontogenesis of non-glandular emergences in the abaxial epidermis. Note the anticlinal divisions of epidermis and anticlinal and periclinal divisions of the subepidermal layer. (C) Non-glandular emergence in the abaxial epidermis (red arrow). These structures have a stellar morphology at maturity. The emergences in the adaxial epidermis have an acute shape (yellow arrows) and are opposite to the abaxial ones. (D–E) Note the development of astrosclereids between the emergences from both epidermal surfaces (D). These cells are lignified (red arrow) (E). Scale bars: 30 μm (A, B), 75 μm (C–E).