

Guan, Z.-J., Shen, B.-C., Wei, W., Tang, Z.-X. and Stewart, N. 2020. Loss of C-genome-specific markers during the transgene introgression from *Brassica napus* to wild *B. juncea*. – Nordic Journal of Botany 2020: e02794

Appendix 1

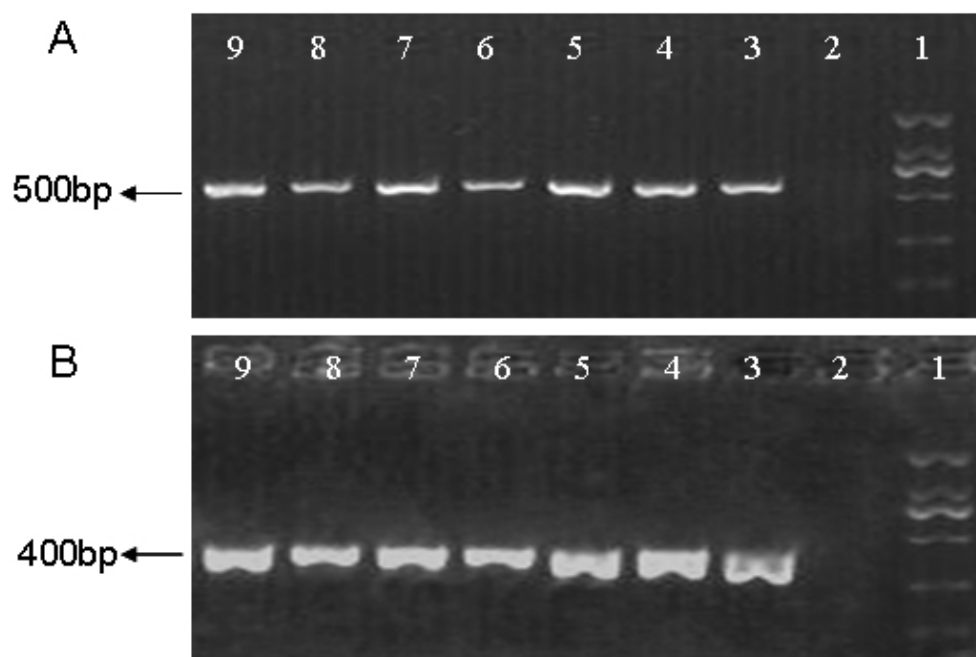


Figure A1. PCR identification of the transgene in hybrids F_1 plants and backcross progenies. A – PCR identification of Bt gene. B - PCR identification of GFP gene. 1: Marker; 2: ck-, Westar; 3: ck+, GT1; 4: F_1 ; 5~9: $BC_1 \sim BC_5$.

Appendix 2

Table A1. The list of single sequence repeat (SSR) primers used in this study.

Chromosome number	Linkage group	Names of the chosen markers
C1	N11	CB10277; CB10443; CB10536; CB10587; Na10H03; Na12C08; Na12H01; Ni4B10; OI10A11; OI10F11;
C2	N12	Bras011; CB10026; CB10316; CB10350; Na12A01; Na12C03; Ni2C12; OI09A03; OI10H02; OI13G05;
C3	N13	BRAS051; BRAS069; CB10057; Na12F12; Ni4G04; OI10B04; OI11B05; OI11G11; OI13D03; OI13H09;
C4	N14	CB10103; CB10122; Na12E05; Na12G04; Na14E08; Ni4-A07; OI10A09; OI10F12; OI11H08; OI13C03;
C5	N15	CB10229; CB10623; Na10B08; Na10D11; Na10-A08; Na10-G08; Ni4C11; OI10B02; OI10G09; OI12-F02;
C6	N16	CB10010; CB10211; CB10234; CB10343; CB10502; CB10526; Na10C06; Na12-A02; Ra2-A05; CB10544;
C7	N17	CB10297; CB10431; CB10528; CB10534; , Na10-C01; Na12A10; Na12F03; OI10B01; OI10H04; OI11C02;
C8	N18	CB10028; CB10139; CB10179; CB10305; CB10504; Ni2-F11; Ni4D09; CB10373; OI12D05; OI12G04;
C9	N19	BRAS002; CB10344; CB10413; Na10B11; Na10D07; Ni2B01; OI11H06; OI12D09; OI12A04; OI13C03;
Unknown	Unknown	83b1